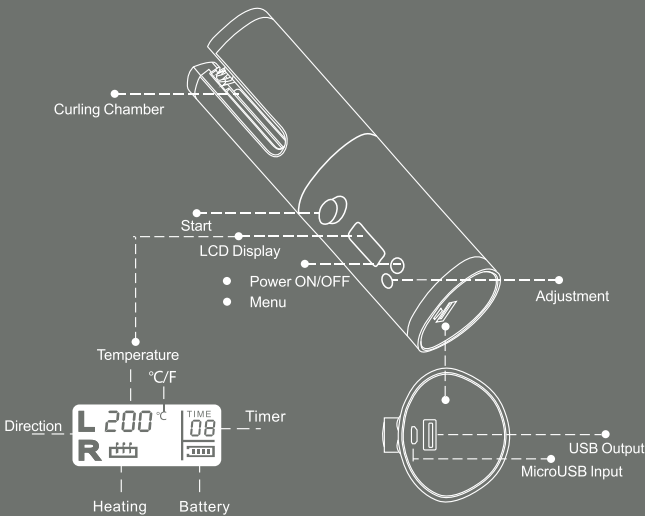


SPECIFICATION



Lithium Battery:5000mAh
Charging Volt: DC 5V
Charging Current: max.2A
Charging time: 3 hours @charging current is 2A@25°C
Output Volt: DC 5V
Output Current: max.2A
Working time:60min@180°C

INSTRUCTION MANUAL



2 IN 1
Wireless Automatic Hair curler
With Power Bank

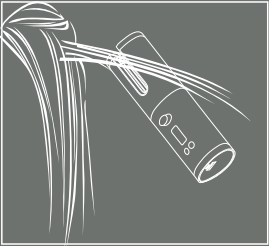
How to use ?

Wireless Automatic Hair Curler

1. Press and hold “Power ON/OFF” for 2s to turn on appliance until you hear a “beep” and LCD display is ON.
Note: Press and hold “Power ON/OFF” for 2s to turn off. If you forget to turn the appliance off, it will shut itself off automatically after 10 minutes.
2. Press “Menu” to choose Temperature, Direction, °C/F and Timer one by one and press “Adjustment” to set the value.
 - Temperature range: 150 °C, 160 °C, 170 °C, 180 °C, 190 °C, 200 °C.
 - Direction: Left or Right.
 - °C/F: °C or F
 - Timer range: 8s, 10s, 12s, 14s, 16s, 18s.
3. Appliance starts to heat following your temperature setting.

Note: Heating symbol will blink when heating. Once it reaches your temperature setting symbol will stop blinking and you will hear “beep-beep”.

4. Comb through to remove any tangles and divide the hair into sections, no more than 2cm wide.



5. Lay the section of hair through curling chamber and hold down 'start' button to active the motor to draw hair into curling chamber.
6. Please release the 'Start' button when you hear the first beep.
7. Automatic curling is finished when you hear final beep. The number of times product will beep will be the same as the Timer set i.e. Timer set on No 8 = equals 8 beeps.



READ ALL INSTRUCTIONS BEFORE USING AND SAVE THESE INSTRUCTIONS

SAFETY CAUTIONS

- This appliance should only be used as described within this instruction booklet.
- WARNING! Do not use this appliance near water contained in basins, bathtubs or other vessels.
- Do not use the appliance in the bathroom where it may get wet.
- Do not immerse the appliance in water or other liquids.
- Always inspect the appliance before use for noticeable signs of damage.
- Do not use if damaged, or if the appliance has been dropped.
- Do not leave the appliance unattended when on.
- Do not place the appliance on any heat sensitive surface whilst in operation.
- In the event of the appliance being left switched on, the appliance will automatically shut off after 10 minutes. If you wish to continue using the appliance after this time, simply turn the power on.
- Take care to avoid the hot surface of the appliance coming into direct contact with the skin, in particular the eyes, ears, face and neck.
- This appliance should not be used by adults who have reduced physical, sensory or mental capabilities, or whose lack of experience and knowledge, might cause a hazard, unless they have been correctly instructed to and understand the safe use and hazards involved and are adequately supervised.
- Careful adult supervision is required when this appliance is used on or near children. Do not allow use by very young children. This appliance is not a toy.
- This appliance should not be used, cleaned or maintained by children.
- Always ensure that this appliance is kept out of the reach of children at all times, particularly during use and whilst cooling.
- Allow appliance to cool before storing away.
- If the USB cable is damaged, it must be replaced by the manufacturer, its service agent or other qualified persons in order to avoid hazard.
- This appliance is not intended for commercial use.

NOTE:
Should you fail to turn the appliance off, it will shut itself off automatically after 10 minutes.

Power Bank:

1. Take a USB cable to connect “USB” output”, the other terminal will connect your device.

